



RECHARGE

PUBLIC - MULTIPURPOSE - TRAINING

COLLECTION





- foldable table (01-04)
- multipurpose chair (05-11)
- student chair (12-15)
- link chair (16-24)
- pantry & cafe (25-26)
- bar stool (27-29)
- banquet chair & table (30-31)
- colour chart

RECHARGE

COLLECTION

"RECHARGE SERIES" is one of our best series to complete your office. With multiple choice of product we can sure that you can find something that suit your office.

in this series it contains various types of furniture for the use of public area, multipurpose and also can be use into your training room.

let's have a look,

foldable table

STCP



PORTABLE

Stackable and foldable, easy to store for limited space area



*classroom



foldable table



ARRANGE YOUR WAY
Change any arrangement anytime
you like with moveable castor



*meeting table

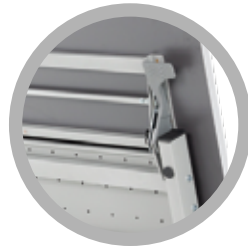
FEATURES:



wire management
storage



castor with
locking trigger



locking
system



ABS edging



socket box
(additional)



STCP

WITHOUT MODESTY PANEL

STC 1260 - 1200(w) x 600(d) x 750(h) mm

STC 1560 - 1500(w) x 600(d) x 750(h) mm

STC 1860 - 1800(w) x 600(d) x 750(h) mm

WITH MODESTY PANEL

STCP 1260 - 1200(w) x 600(d) x 750(h) mm

STCP 1560 - 1500(w) x 600(d) x 750(h) mm

STCP 1860 - 1800(w) x 600(d) x 750(h) mm

epoxy colour (for leg)



*silver



*white



*black

-2.5mm (T) cold roll powder coated metal plate
-Dia 75mm double wheel castor



CHOOSE YOUR COLOUR
choose your favourite within
Solid colour or woodgrain for
your table top



FOLDABLE
Easy to fold even for women
with simple locking system

foldable table



FEATURES:



wire management storage



castor with locking trigger



locking system



ABS edging



socket box (additional)

TFT

WITHOUT MODESTY PANEL

TFT 1260 - 1200(w) x 600(d) x 750(h) mm
 TFT 1560 - 1500(w) x 600(d) x 750(h) mm
 TFT 1860 - 1800(w) x 600(d) x 750(h) mm
 TFT 1275 - 1200(w) x 750(d) x 750(h) mm
 TFT 1575 - 1500(w) x 750(d) x 750(h) mm
 TFT 1875 - 1800(w) x 750(d) x 750(h) mm

WITH MODESTY PANEL

TFTP 1260 - 1200(w) x 600(d) x 750(h) mm
 TFTP 1560 - 1500(w) x 600(d) x 750(h) mm
 TFTP 1860 - 1800(w) x 600(d) x 750(h) mm
 TFTP 1275 - 1200(w) x 750(d) x 750(h) mm
 TFTP 1575 - 1500(w) x 750(d) x 750(h) mm
 TFTP 1875 - 1800(w) x 750(d) x 750(h) mm

COLOUR CHART:

MELAMINE CHIPBOARD



white-101



oak pegasus-802



faggiona-804



ladinia-805



orissa ash-601



warm rovere-808



white oak-809



beech-161



walnut-308



walnut vasari-308



maple-712



congo-714



iceland-729



graphite-200



light grey-238



black-260



ivory-994

E1- Formaldehyde

E2- Formaldehyde

multipurpose chair

AXIS

CL228

DIMENSION:
660(w) x 520(d) x 880(h) mm

- TYPE:**
- mesh backrest
 - foldable seat
 - fixed armrest
 - epoxy base



CL338

DIMENSION:
660(w) x 520(d) x 880(h) mm

- TYPE:**
- polypropylene backrest
 - foldable seat
 - fixed armrest
 - epoxy base



CL448

DIMENSION:
660(w) x 520(d) x 880(h) mm

- TYPE:**
- polypropylene backrest with padding
 - foldable seat
 - fixed armrest
 - epoxy base

also available : without armrest

with drawing tablet



CL227

DIMENSION:
760(w) x 520(d) x 880(h) mm



Optional:
with glider



CL447

DIMENSION:
760(w) x 520(d) x 880(h) mm

CL337

DIMENSION:
760(w) x 520(d) x 880(h) mm



FEATURES:



05 high density moulded injected FOAM seat



Optional:
with glider



flip up seat



stackable

AXIS 2

multipurpose chair

2MA

DIMENSION:
660(w) x 520(d) x 880(h) mm

- TYPE:**
- mesh backrest
 - foldable seat
 - fixed armrest
 - epoxy base



2SA

DIMENSION:
660(w) x 520(d) x 880(h) mm

- TYPE:**
- polypropylene backrest
 - foldable seat
 - fixed armrest
 - epoxy base



2PA

DIMENSION:
660(w) x 520(d) x 880(h) mm

- TYPE:**
- polypropylene backrest with padding
 - foldable seat
 - fixed armrest
 - epoxy base

also available : without armrest

with drawing tablet



2MT

DIMENSION:
760(w) x 520(d) x 880(h) mm



2ST

DIMENSION:
760(w) x 520(d) x 880(h) mm



2PT

DIMENSION:
760(w) x 520(d) x 880(h) mm

FEATURES:



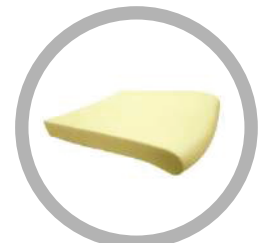
stackable



flip up seat



Optional:
with glider



high density moulded
injected FOAM seat

multipurpose chair

4 leg design

CL68 (A04)

DIMENSION:
620(w) x 630(d) x 800(h) mm

TYPE:
- polypropylene backrest
- epoxy base with writing tablet (flip up and fold a side)



CL68 (A03)

DIMENSION:
620(w) x 630(d) x 800(h) mm

TYPE:
- polypropylene backrest with writing tablet (flip up only)
- epoxy base



CL68 (A01)

DIMENSION:
650(w) x 600(d) x 800(h) mm

TYPE:
- polypropylene backrest
- epoxy base

also available : without armrest

square leg design



CL68 (S+A03)

DIMENSION:
620(w) x 630(d) x 800(h) mm



CL68 (S+A04)

DIMENSION:
620(w) x 630(d) x 800(h) mm



CL68 (S+A01)

DIMENSION:
650(w) x 600(d) x 800(h) mm

CUSTOM BACK & SEAT:



UF-S

Polypropylene chair with seat (upholstery)



UF-SB

Polypropylene chair with seat (upholstery) & backrest (fabric)



UF-SB

Polypropylene chair with seat (upholstery) & backrest (mesh)



special feature:
propylene base with castor

Polypropylene colour:



sky blue



blue



green



apple green



red



orange



yellow



ivory



grey



black

multipurpose chair



NT998

DIMENSION:
650(w) x 650(d) x 800(h) mm

- TYPE:**
- mesh backrest
 - foldable seat
 - fixed armrest
 - epoxy base



NT999

DIMENSION:
650(w) x 650(d) x 800(h) mm

- TYPE:**
- mesh backrest
 - foldable seat
 - fixed armrest
 - epoxy base



NT999-TB4

DIMENSION:
650(w) x 650(d) x 800(h) mm

- TYPE:**
- mesh backrest
 - foldable seat
 - fixed armrest
 - epoxy base

also available on 830h

NT888 & NT889 (without writing pad)
NT888-TB4 & NT889-TB4 (with writing pad)

NT998-TB4

DIMENSION:
650(w) x 650(d) x 800(h) mm

- TYPE:**
- mesh backrest
 - foldable seat
 - fixed armrest
 - epoxy base

with drawing tablet

FEATURES:



stackable



breathable firm mesh back



flip & fold side writing tablet



high density moulded injected FOAM seat

multipurpose chair

COMFY

C588

DIMENSION:
520(w) x 590(d) x 795(h) mm

TYPE:
- polypropylene backrest
- chrome base



CT618 (SA)

DIMENSION:
515(w) x 590(d) x 795(h) mm

TYPE:
- polypropylene backrest
with seat padding
- fixed armrest
- epoxy base



50 nos
Minimum
Order
Quantity

CT598

DIMENSION:
525(w) x 590(d) x 795(h) mm

TYPE:
- polypropylene backrest
- epoxy base



CT618 (WT4)

DIMENSION:
615(w) x 590(d) x 795(h) mm

TYPE:
- polypropylene backrest
- epoxy base with writing
tablet (flip up and fold a side)



special feature:
propylene base
with castor



CT598

DIMENSION:
525(w) x 590(d) x 795(h) mm

TYPE:
- polypropylene backrest
with seat padding
- epoxy base

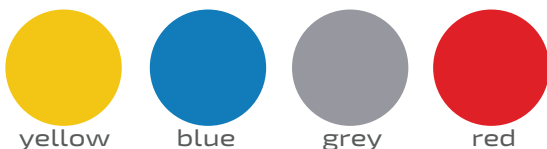


C588

DIMENSION:
520(w) x 590(d) x 795(h) mm

TYPE:
- polypropylene backrest
with seat padding
- chrome base

Polypropylene colour:



yellow

blue

grey

red

P2

multipurpose chair

CL56 (A01)

DIMENSION:
650(w) x 600(d) x 800(h) mm

- TYPE:**
- polypropylene backrest
 - fixed armrest
 - epoxy base



CL56 (A03)

DIMENSION:
620(w) x 630(d) x 800(h) mm

- TYPE:**
- polypropylene backrest
 - epoxy base with writing tablet (flip up only)



special feature:
hung basket



CL56 (A04)

DIMENSION:
620(w) x 630(d) x 800(h) mm

- TYPE:**
- polypropylene backrest
 - epoxy base with writing tablet (flip up and fold a side)



also available : without armrest



CL56 (S+A01)

DIMENSION:
650(w) x 600(d) x 800(h) mm



CL56 (S+A03)

DIMENSION:
620(w) x 630(d) x 800(h) mm



CL56 (S+A04)

DIMENSION:
620(w) x 630(d) x 800(h) mm

CUSTOMIZE:



CL56 (F+A01)
- fully grey



CL56 (F+A03)
- fully ivory



CL56 (C)
- chrome (leg)



CL56 (G)
- polypropylene base with castor



optional:
with padding

Polypropylene colour:



sky blue



blue



green



apple green



red



orange



yellow



ivory



grey



black

multipurpose chair

P4

P4-C

DIMENSION:

470(w) x 510(d) x 800(h) mm

TYPE:

- polypropylene backrest
- chrome finish base



P4-CS

DIMENSION:

470(w) x 510(d) x 800(h) mm

TYPE:

- polypropylene backrest
- upholstery seat
- chrome finish base



round glass table



P4-T75

DIMENSION:

750(dia) x 750(h) mm



P4-CSB

DIMENSION:

470(w) x 510(d) x 800(h) mm

TYPE:

- polypropylene backrest
- upholstery seat & backrest
- chrome finish base

also available : dia 900 and 560

Polypropylene colour:



black



dark grey



purple



light blue



red



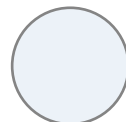
orange



yellow



green



white



CL 57(H)

DIMENSION:

430(w) x 535(d) x 785(h) mm

TYPE:

- polypropylene backrest
- epoxy base



also available :
- white epoxy base
- low height



CL 57(M)

DIMENSION:

430(w) x 525(d) x 760(h) mm

TYPE:

- polypropylene backrest
- epoxy base



CL 65 (T05)

DIMENSION:

680(w) x 480(d) x 750(h) mm

TYPE:

- chipboard table top (grey)
- epoxy base



CL 65 (T06)

DIMENSION:

680(w) x 480(d) x 750(h) mm

TYPE:

- chipboard table top (grey)
- epoxy base

student chair



CL51 (G)

DIMENSION:
460(w) x 600(d) x 800-920(h) mm

- TYPE:**
- polypropylene seat & backrest
 - propylene base with castor
 - adjustable seat height mechanism



CL51 (A04)

DIMENSION:
620(w) x 630(d) x 800(h) mm

- TYPE:**
- polypropylene backrest
 - epoxy base with writing tablet (flip up and fold a side)



CL51 (A03)

DIMENSION:
620(w) x 630(d) x 800(h) mm

- TYPE:**
- polypropylene backrest
 - epoxy base with writing tablet (flip up only)



also available : without armrest & epoxy base



CL52 (G)

DIMENSION:
460(w) x 600(d) x 800-920(h) mm

- TYPE:**
- polypropylene seat & backrest
 - propylene base with castor
 - adjustable seat height mechanism



CL52 (A04)

DIMENSION:
620(w) x 630(d) x 800(h) mm

- TYPE:**
- polypropylene backrest
 - epoxy base with writing tablet (flip up and fold a side)



CL52 (A03)

DIMENSION:
620(w) x 630(d) x 800(h) mm

- TYPE:**
- polypropylene backrest
 - epoxy base with writing tablet (flip up only)



special colour (CL52)



orange



green

Polypropylene colour (standard)



blue



red



grey



black

student chair



CL54 (G)

DIMENSION:
460(w) x 600(d) x 800-920(h) mm

- TYPE:**
- polypropylene seat & backrest
 - propylene base with castor
 - adjustable seat height mechanism



CL54 (A04)

DIMENSION:
620(w) x 630(d) x 800(h) mm

- TYPE:**
- polypropylene backrest
 - epoxy base with writing tablet (flip up and fold a side)



CL54 (A03)

DIMENSION:
620(w) x 630(d) x 800(h) mm

- TYPE:**
- polypropylene backrest
 - epoxy base with writing tablet (flip up only)



also available : without armrest & epoxy base



CL59 (G)

DIMENSION:
460(w) x 600(d) x 800-920(h) mm

- TYPE:**
- polypropylene seat & backrest
 - propylene base with castor
 - adjustable seat height mechanism



CL59 (A04)

DIMENSION:
620(w) x 630(d) x 800(h) mm

- TYPE:**
- polypropylene backrest
 - epoxy base with writing tablet (flip up and fold a side)



CL59 (A03)

DIMENSION:
620(w) x 630(d) x 800(h) mm

- TYPE:**
- polypropylene backrest
 - epoxy base with writing tablet (flip up only)



Polypropylene colour (standard)



blue



red



grey



black

special colour (CL54)



orange



green

special colour (CL59)



yellow

student chair



CL62 (G)

DIMENSION:
460(w) x 600(d) x 800-920(h) mm

- TYPE:**
- upholstery seat & backrest
 - propylene base with castor
 - adjustable seat height mechanism



CL62 (A04)

DIMENSION:
620(w) x 630(d) x 800(h) mm

- TYPE:**
- upholstery seat & backrest
 - epoxy base with writing tablet (flip up and fold a side)



CL62 (A03)

DIMENSION:
620(w) x 630(d) x 800(h) mm

- TYPE:**
- upholstery seat & backrest
 - epoxy base with writing tablet (flip up only)



also available : without armrest & epoxy base



special feature:
hung basket



CL63 (G)

DIMENSION:
460(w) x 600(d) x 800-920(h) mm

- TYPE:**
- upholstery seat & backrest
 - propylene base with castor
 - adjustable seat height mechanism



CL63 (A04)

DIMENSION:
620(w) x 630(d) x 800(h) mm

- TYPE:**
- upholstery seat & backrest
 - epoxy base with writing tablet (flip up and fold a side)



CL63 (A03)

DIMENSION:
620(w) x 630(d) x 800(h) mm

- TYPE:**
- upholstery seat & backrest
 - epoxy base with writing tablet (flip up only)



student chair



RSC 401

DIMENSION:

490(w) x 525(d) x 780(h) mm

TYPE:

- fabric upholstery backrest
- fabric upholstery seat
- epoxy base



RSC 403

DIMENSION:

580(w) x 525(d) x 786(h) mm

TYPE:

- fabric upholstery backrest
- fabric upholstery seat
- epoxy base
- pu fixed armrest



RSC311-F

DIMENSION:

530(w) x 580(d) x 840(h) mm

TYPE:

- fabric upholstery backrest
- fabric upholstery seat
- epoxy base



RSC311-AF

DIMENSION:

660(w) x 580(d) x 840(h) mm

TYPE:

- fabric upholstery backrest
- fabric upholstery seat
- epoxy base with writing tablet (flip up only)



RSC312-F

DIMENSION:

450(w) x 570(d) x 800(h) mm

TYPE:

- fabric upholstery backrest
- fabric upholstery seat
- 5 pronged polypopylene chair base
- adjustable seat height mechanism



RSC312-AF

DIMENSION:

550(w) x 570(d) x 800(h) mm

TYPE:

- fabric upholstery backrest
- fabric upholstery seat
- pu fixed armrest
- 5 pronged polypopylene chair base
- adjustable seat height mechanism

FINO



FINO-2

DIMENSION:
1160(w) x 680(d) x 780(h) mm

TYPE:
- chrome metal structure



FINO-3

DIMENSION:
1720(w) x 680(d) x 780(h) mm

TYPE:
- chrome metal structure



FINO-4

DIMENSION:
2280(w) x 680(d) x 780(h) mm

TYPE:
- chrome metal structure

upholstery series



FINO-2U

DIMENSION:
1160(w) x 680(d) x 780(h) mm

TYPE:
- chrome metal structure c/w upholstery



FINO-3U

DIMENSION:
1720(w) x 680(d) x 780(h) mm

TYPE:
- chrome metal structure c/w upholstery



FINO-4U

DIMENSION:
2280(w) x 680(d) x 780(h) mm

TYPE:
- chrome metal structure c/w upholstery

also available : five seater

please refer colour chart for fabric



DELFINO-LITE 2

DIMENSION:
1235(w) x 700(d) x 780(h) mm

TYPE:
- chrome metal structure



DELFINO-LITE 3

DIMENSION:
1810(w) x 700(d) x 780(h) mm

TYPE:
- chrome metal structure



DELFINO-LITE 4

DIMENSION:
2385(w) x 700(d) x 780(h) mm

TYPE:
- chrome metal structure

upholstery series



DELFINO-LITE 3U

DIMENSION:
1810(w) x 700(d) x 780(h) mm

TYPE:
- chrome metal structure c/w
backrest and seat padding



DELFINO-LITE 2U

DIMENSION:
1235(w) x 700(d) x 780(h) mm

TYPE:
- chrome metal structure c/w
backrest and seat padding



DELFINO-LITE 4U

DIMENSION:
2385(w) x 700(d) x 780(h) mm

TYPE:
- chrome metal structure c/w
backrest and seat padding

also available : five seater

please refer colour chart for fabric or PU colour

CAPRICON



RLC 1143-4

DIMENSION:
2000(w) x 594(d) x 970(h) mm

- TYPE:**
- mesh backrest with lumbar support
 - PVC upholstery seat
 - chrome finish base



RLC 1143-2

DIMENSION:
1064(w) x 594(d) x 970(h) mm

- TYPE:**
- mesh backrest with lumbar support
 - PVC upholstery seat
 - chrome finish base



RLC 1143-3

DIMENSION:
1490(w) x 594(d) x 970(h) mm

- TYPE:**
- mesh backrest with lumbar support
 - PVC upholstery seat
 - chrome finish base

also available : five seater

please refer colour chart for mesh and PU

upholstery series

LIBRA



RLC 1139-3

DIMENSION:
1630(w) x 550(d) x 480(h) mm

- TYPE:**
- PVC upholstery seat
 - chrome finish base



RLC 1139-3A

DIMENSION:
1630(w) x 550(d) x 480(h) mm

- TYPE:**
- PVC upholstery seat
 - chrome finish base

please refer colour chart for PU

link chair

AXIS 3

CL68-2

DIMENSION:
1010(w) x 600(d) x 800(h) mm

TYPE:

- polypropylene seat & backrest
- epoxy base



CL68-3

DIMENSION:
1540(w) x 600(d) x 800(h) mm

TYPE:

- polypropylene seat & backrest
- epoxy base



also available : five seater



CL68-4

DIMENSION:
2070(w) x 600(d) x 800(h) mm

TYPE:

- polypropylene seat & backrest
- epoxy base

seat padding series

upholstery series



CL68-3N

DIMENSION:
1540(w) x 600(d) x 800(h) mm



CL68-2N

DIMENSION:
1010(w) x 600(d) x 800(h) mm



special feature:
foldable seat

CUSTOM BACK & SEAT:



UF-S

Polypropylene chair with seat (upholstery)



UF-SB

Polypropylene chair with seat (upholstery) & backrest (fabric)



UF-SB

Polypropylene chair with seat (upholstery) & backrest (mesh)



special leg:
suitable for seminar hall

Polypropylene colour:



sky blue



blue



green



apple green



red



orange



yellow



ivory



grey



black

P2

CL56-2V

DIMENSION:
1010(w) x 600(d) x 800(h) mm

TYPE:
- polypropylene seat & backrest
- epoxy base



CL56-3V

DIMENSION:
1540(w) x 600(d) x 800(h) mm

TYPE:
- polypropylene seat & backrest
- epoxy base



CL56-4V

DIMENSION:
2070(w) x 600(d) x 800(h) mm

TYPE:
- polypropylene seat & backrest
- epoxy base

also available : five seater

seat padding series

upholstery series



CL56-3N

DIMENSION:
1540(w) x 600(d) x 800(h) mm



CL56-2N

DIMENSION:
1010(w) x 600(d) x 800(h) mm

polypropylene series



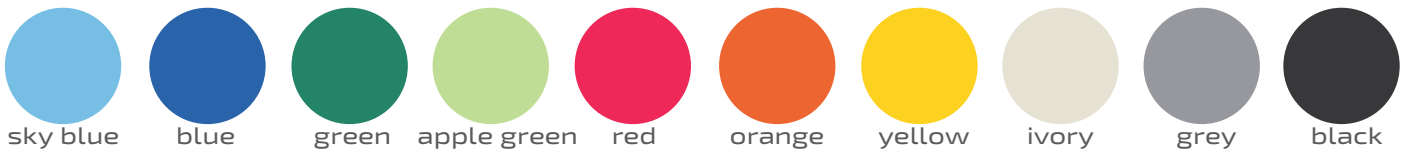
CL56-4

DIMENSION:
2070(w) x 600(d) x 800(h) mm



special feature:
foldable seat

Polypropylene colour:





CL898

DIMENSION:

1650(w) x 590(d) x 795(h) mm - 3 seater
 2145(w) x 590(d) x 795(h) mm - 4 seater
 2640(w) x 590(d) x 795(h) mm - 5 seater

TYPE:

- polypropylene seat & backrest
- epoxy base (v shape)

CL988

DIMENSION:

1530(w) x 590(d) x 795(h) mm - 3 seater
 2025(w) x 590(d) x 795(h) mm - 4 seater
 2520(w) x 590(d) x 795(h) mm - 5 seater

TYPE:

- polypropylene backrest
- polypropylene seat with padding
- epoxy base (i shape)



CL899

DIMENSION:

1945(w) x 590(d) x 795(h) mm - 3 seater
 2530(w) x 590(d) x 795(h) mm - 4 seater
 3115(w) x 590(d) x 795(h) mm - 5 seater

TYPE:

- polypropylene backrest
- polypropylene seat with padding
- epoxy base (v shape) with writing tablet (flip up and fold a side)



CL989

DIMENSION:

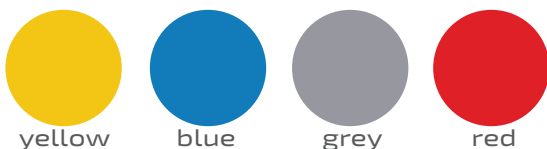
1741(w) x 590(d) x 795(h) mm - 3 seater
 2328(w) x 590(d) x 795(h) mm - 4 seater
 2915(w) x 590(d) x 795(h) mm - 5 seater

TYPE:

- polypropylene backrest
- polypropylene seat with padding
- epoxy base (i shape) with writing tablet (flip up only)



Polypropylene colour:



Minimum
Order
Quantity

FINO

RLC 1136-3

DIMENSION:
1500(w) x 610(d) x 920(h) mm

TYPE:
- fabric upholstery seat & backrest
- epoxy base



RLC 1135-3

DIMENSION:
1480(w) x 590(d) x 880(h) mm

TYPE:
- fabric upholstery seat & backrest
- epoxy base

RLC 1137-3

DIMENSION:
1510(w) x 580(d) x 900(h) mm

TYPE:
- fabric upholstery seat & backrest
- epoxy base



also available :five seater

BC 590-2

DIMENSION:
1000(w) x 500(d) x 750(h) mm

TYPE:
- fabric upholstery seat & backrest
- epoxy base



BC 590-3

DIMENSION:
1540(w) x 500(d) x 750(h) mm

TYPE:
- fabric upholstery seat & backrest
- epoxy base

upholstery series



BC 590-4

DIMENSION:
2080(w) x 500(d) x 750(h) mm

TYPE:
- fabric upholstery seat & backrest
- epoxy base

also available :five seater

please refer colour chart for fabric



BC 600-4

DIMENSION:
2060(w) x 550(d) x 750(h) mm

TYPE:
- polypropylene seat & backrest
- epoxy base



BC 600-3

DIMENSION:
1550(w) x 550(d) x 750(h) mm

TYPE:
- polypropylene seat & backrest
- epoxy base



BC 600-2

DIMENSION:
1030(w) x 550(d) x 750(h) mm

TYPE:
- polypropylene seat & backrest
- epoxy base



BC 660-4

DIMENSION:
1910(w) x 560(d) x 820(h) mm

TYPE:
- polypropylene seat & backrest
- epoxy base



BC 660-3

DIMENSION:
1430(w) x 560(d) x 820(h) mm

TYPE:
- polypropylene seat & backrest
- epoxy base



BC 660-2

DIMENSION:
960(w) x 560(d) x 820(h) mm

TYPE:
- polypropylene seat & backrest
- epoxy base

also available : five seater



BC 670-3

DIMENSION:
1530(w) x 560(d) x 780(h) mm

TYPE:
- polypropylene seat & backrest
- epoxy base



BC 670-2

DIMENSION:
1020(w) x 560(d) x 780(h) mm

TYPE:
- polypropylene seat & backrest
- epoxy base



BC 670-4

DIMENSION:
2030(w) x 560(d) x 780(h) mm

TYPE:
- polypropylene seat & backrest
- epoxy base

BC 680-4

DIMENSION:
2140(w) x 560(d) x 750(h) mm

TYPE:
- polypropylene seat & backrest
- epoxy base



BC 680-3

DIMENSION:
1600(w) x 560(d) x 750(h) mm

TYPE:
- polypropylene seat & backrest
- epoxy base



BC 680-2

DIMENSION:
1070(w) x 560(d) x 750(h) mm

TYPE:
- polypropylene seat & backrest
- epoxy base

also available : five seater



HIGH CHAIR

DIMENSION:
410(w) x 470(d) x 1010(h) mm

TYPE:
- rubberwood seat
- epoxy base



LOW CHAIR

DIMENSION:
520(w) x 470(d) x 820(h) mm

TYPE:
- rubberwood seat
- epoxy base



special feature:
- back splash
- overall height
1210(mm)



HIGH BENCH

DIMENSION:
1200(w) x 500(d) x 1050(h) mm

TYPE:
- rubberwood table top
- epoxy base
- available on 1800 & 2400(w)



also available
in round top



SQUARE TABLE (L)

DIMENSION:
600(w) x 600(d) x 750(h) mm

TYPE:
- rubberwood table top
- epoxy base
- available on 600/750/900(dia)
table top

SQUARE TABLE (H)

DIMENSION:
600(w) x 600(d) x 1050(h) mm

TYPE:
- rubberwood table top
- epoxy base
- available on 600/750/900(dia)
table top



CY18W

DIMENSION:
390(w) x 390(d) x 450(h) mm

TYPE:
- rubber wood seat
- epoxy base



also available
without rubber
wood seat



CY1830W

DIMENSION:
430(w) x 440(d) x 720(h) mm

TYPE:
- rubber wood seat
- epoxy base c/w backrest



CY2000

DIMENSION:
450(w) x 450(d) x 870(h) mm

TYPE:
- epoxy base c/w backrest

CY1830

DIMENSION:
430(w) x 440(d) x 720(h) mm

TYPE:
- epoxy base c/w backrest

CY30W

DIMENSION:
410(w) x 410(d) x 760(h) mm

TYPE:
- rubber wood seat
- epoxy base c/w footrest



CY301W

DIMENSION:
410(w) x 410(d) x 940(h) mm

TYPE:
- epoxy base c/w backrest
and footrest



also available
without rubber
wood seat

also available
without rubber
wood seat



bar stool



RES 73

DIMENSION:
450(Dia) x 780(h) mm

TYPE:
- PVC upholstery seat
- chrome finish base



RES 83

DIMENSION:
390(Dia) x 785(h) mm

TYPE:
- PVC upholstery seat
- chrome finish base
c/w footrest



RES 93

DIMENSION:
300(Dia) x 740(h) mm

TYPE:
- PVC upholstery seat
- chrome finish base
c/w footrest



RES 34

DIMENSION:
540(w) x 610(d) x 785(h) mm

TYPE:
- PVC upholstery seat
- chrome finish base
c/w footrest



RES 33

DIMENSION:
450(w) x 660(d) x 765(h) mm

TYPE:
- PVC upholstery seat
- chrome finish base
c/w footrest



RES 43

DIMENSION:
450(w) x 660(d) x 730(h) mm

TYPE:
- PVC upholstery seat
- chrome finish base
c/w footrest



ES 35

DIMENSION:
420(w) x 420(d) x 740(h) mm

TYPE:
- PVC upholstery seat
- chrome finish base
c/w footrest



ES 36

DIMENSION:
360(w) x 420(d) x 740(h) mm

TYPE:
- PVC upholstery seat
- chrome finish base
c/w footrest



ES 37

DIMENSION:
410(w) x 460(d) x 740(h) mm

TYPE:
- PVC upholstery seat
- chrome finish base
c/w footrest

ES 38

DIMENSION:
410(w) x 460(d) x 740(h) mm

TYPE:
- PVC upholstery seat
- chrome finish base
c/w footrest
-adjustable high seat



ES 39

DIMENSION:
430(w) x 540(d) x 740(h) mm

TYPE:
- PVC upholstery seat
- chrome finish base
c/w footrest



ES 40

DIMENSION:
360(w) x 440(d) x 740(h) mm

TYPE:
- PVC upholstery seat
- chrome finish base
c/w footrest
-adjustable high seat



ES 41

DIMENSION:
410(w) x 460(d) x 740(h) mm

TYPE:
- PVC upholstery seat
- chrome finish base
c/w footrest
-adjustable high seat



ES 44

DIMENSION:
360(w) x 460(d) x 740(h) mm

TYPE:
- rubberwood seat
- chrome finish base
c/w footrest
-adjustable high seat



EBS 07

DIMENSION:
400(w) x 440(d) x 720(h) mm

TYPE:
- PU upholstery seat
- chrome finish base
with backrest

EBS 08

DIMENSION:
400(w) x 440(d) x 920(h) mm

TYPE:
- PU upholstery seat
- chrome finish base
c/w footrest &
backrest



EBS 08-go

DIMENSION:
400(w) x 410(d) x 970-1080(h) mm

TYPE:
- PU upholstery seat
- chrome finish base
c/w footrest &
backrest
-adjustable high seat



EBS 08-gx

DIMENSION:
560(w) x 560(d) x 970-1080(h) mm

TYPE:
- PU upholstery seat
- chrome finish base
c/w footrest &
backrest
-adjustable high seat



bar stool



EBS 09

DIMENSION:
460(w) x 480(d) x 720(h) mm

TYPE:
- PU upholstery seat
- chrome base with backrest



EBS 10

DIMENSION:
460(w) x 480(d) x 925(h) mm

TYPE:
- PU upholstery seat
- chrome base
c/w footrest &
backrest



EBS 10-GX

DIMENSION:
560(w) x 560(d) x 940-1050(h) mm

TYPE:
- PU upholstery seat
- chrome base
c/w footrest &
backrest
-adjustable high seat



EBS 14

DIMENSION:
400(w) x 440(d) x 790(h) mm

TYPE:
- PU upholstery seat
with backrest
- chrome base
c/w footrest



EBS 10-GO

DIMENSION:
460(w) x 480(d) x 940-1050(h) mm

TYPE:
- PU upholstery seat
- chrome base
c/w footrest &
backrest
-adjustable high seat



EBS 13

DIMENSION:
400(w) x 440(d) x 720(h) mm

TYPE:
- PU upholstery seat
with backrest
- chrome base



EBS 14-GX

DIMENSION:
560(w) x 560(d) x 930-1040(h) mm

TYPE:
- PU upholstery seat
with backrest
- chrome base
c/w footrest
-adjustable high seat

EBS 14-GO

DIMENSION:
400(w) x 410(d) x 930-1040(h) mm

TYPE:
- PU upholstery seat
with backrest
- chrome base
c/w footrest
-adjustable high seat



RBC 361

DIMENSION:
430(w) x 560(d) x 950(h) mm

TYPE:
- fabric upholstery backrest
and seat
- epoxy base



RBC 363

DIMENSION:
430(w) x 560(d) x 940(h) mm

TYPE:
- fabric upholstery backrest
and seat
- chrome base



RBC 831

DIMENSION:
430(w) x 560(d) x 910(h) mm

TYPE:
- fabric upholstery backrest
and seat
- epoxy base



RBC 871

DIMENSION:
430(w) x 560(d) x 910(h) mm

TYPE:
- fabric upholstery backrest
and seat
- epoxy base



RBC 861

DIMENSION:
430(w) x 560(d) x 940(h) mm

TYPE:
- fabric upholstery backrest
and seat
- epoxy base



RBC 881

DIMENSION:
430(w) x 560(d) x 940(h) mm

TYPE:
- fabric upholstery backrest
and seat
- epoxy base



RBC 891

DIMENSION:
430(w) x 560(d) x 910(h) mm

TYPE:
- fabric upholstery backrest
and seat
- epoxy base



RBC 900

DIMENSION:
430(w) x 560(d) x 950(h) mm

TYPE:
- fabric upholstery backrest
and seat
- epoxy base

COLOUR:

- chair base : gold / chrome / black / l.grey
- fabric : please refer fabric chart

banquet table



VF

RECTANGULAR BANQUET TABLE

VF 2515 N

750(w) x 450(d) x 760(h) mm

VF 315 N

900(w) x 450(d) x 760(h) mm

VF 415 N

1200(w) x 450(d) x 760(h) mm

VF 515 N

1500(w) x 450(d) x 760(h) mm

VF 615 N

1800(w) x 450(d) x 760(h) mm

VF 2520 N

750(w) x 600(d) x 760(h) mm

VF 320 N

900(w) x 600(d) x 760(h) mm

VF 420 N

1200(w) x 600(d) x 760(h) mm

VF 520 N

1500(w) x 600(d) x 760(h) mm

VF 620 N

1800(w) x 600(d) x 760(h) mm

VF 630 N

1800(w) x 900(d) x 760(h) mm

VF 2525 N

750(w) x 750(d) x 760(h) mm

VF 325 N

900(w) x 750(d) x 760(h) mm

VF 425 N

1200(w) x 750(d) x 760(h) mm

VF 525 N

1500(w) x 750(d) x 760(h) mm

VF 625 N

1800(w) x 750(d) x 760(h) mm



VFQ

ROUND BANQUET TABLE

VFQ 40 N

1200(dia) x 760(h) mm

VFQ 50 N

1500(dia) x 760(h) mm

VFQ 60 N

1800(dia) x 760(h) mm

TYPE:

- 16mm (T) melamine laminated chipboard
- ABS edging (d.grey)
- 25x25 mild steel epoxy coated (opt.1)
- 32x32 mild steel epoxy coated (opt.2)

Polypropylene colour:



grey



beech



cherry



RECTANGULAR BANQUET TABLE



CORNER BANQUET TABLE



CORNER BANQUET TABLE



RBC BQT



BANQUET CHAIR TROLLEY

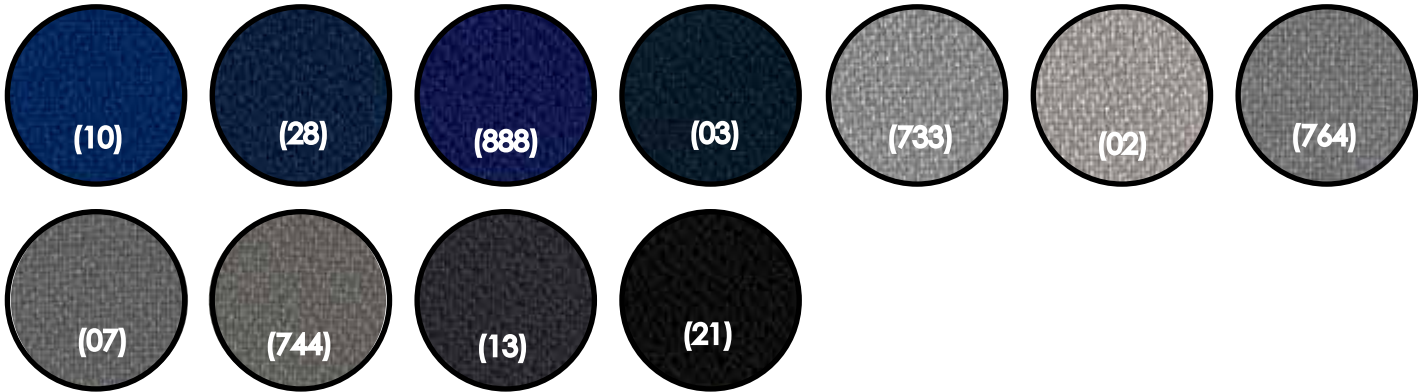


ROUND TABLE TROLLEY

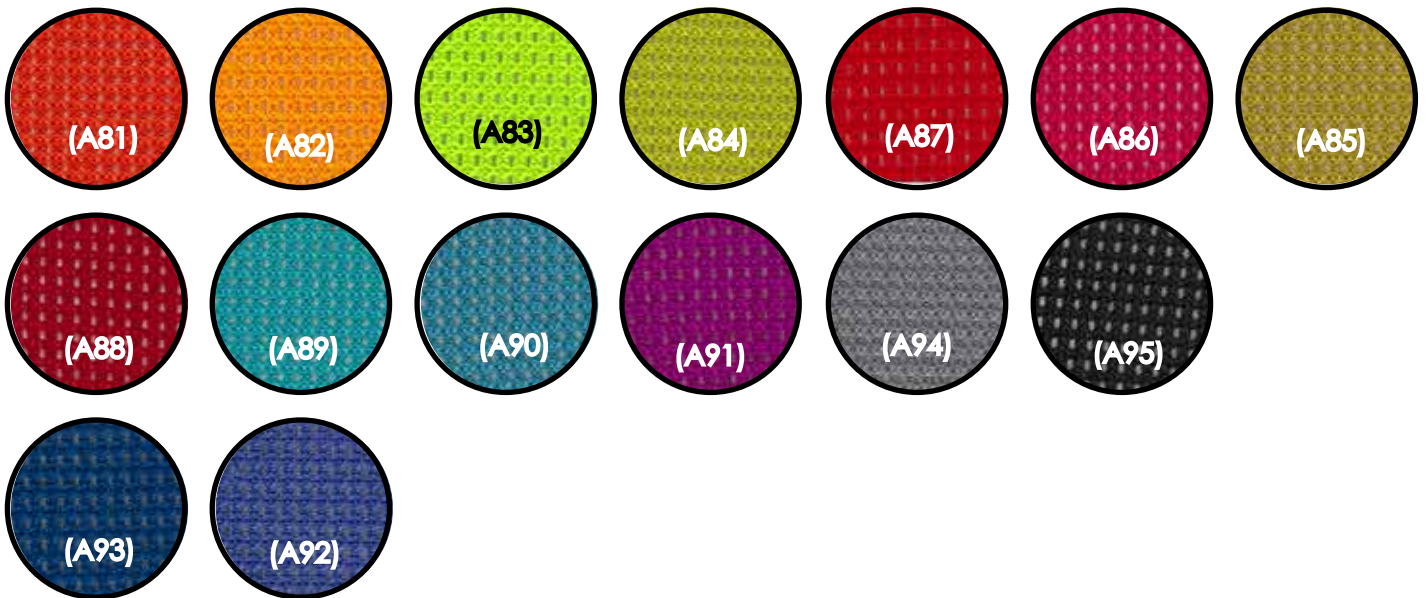


RECTANGULAR TABLE TROLLEY





AIRMESH - MESH COLLECTION



A81 - ORANGE / **A82** - YELLOW / **A83** - APPLE GREEN /
A84 - NEW LEAF / **A85** - GOLDEN BERRY / **A86** - PINK /
A87 - RED / **A88** - MAROON / **A89** - WATERFALL /
A90 - AQUA OCEAN / **A91** - PURPLE / **A92** - BLUE BERRY /
A93 - BLUE / **A94** - GREY / **A95** - BLACK

SENIJI - MESH

COLLECTION

colour
chart



AURORA - PU



801 - WHITE / 802 - ORANGE / 803 - MAIZE / 805 - OASIS / 806 - TAUPE / 807 - OLIVE /
808 - PINK / 809 - YELLOW / 810 - NIGHT SKY / 811 - GREEN / 812 - RED / 813 - CAMEL /
815 - MOCHA / 816 - LAGOON / 817 - VELVET / 818 - SAND / 819 - BURNT UMBER /
820 - BLUE / 821 - RUBY / 822 - OAK / 823 - BLACK / 825 - COSTA



11 - WHITE / **10** - CREAM / **01** - CREAM YELLOW / **19** - LIGHT BROWN / **17** - LIGHT ORANGE /
15 - YELLOW / **14** - SAND STONE / **02** - CAMEL / **07** - ORANGE / **18** - LIGHT GREEN /
04 - SILVER / **13** - SHADOW / **12** - CHILI RED / **16** - GREEN / **05** - GREY /
03 - CHOCOLATE / **08** - MAROON / **20** - LAKE BLUE / **06** - COFFEE / **09** - BLACK



PUBLIC - MULTIPURPOSE - TRAINING